

DEDON

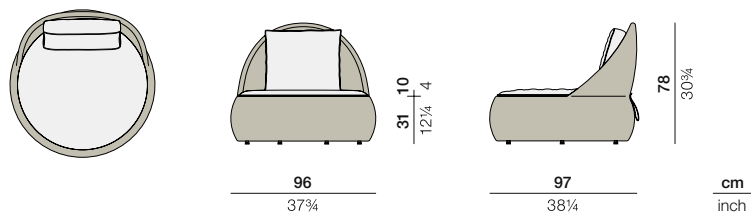
DALA

DALA

Lounge chair

Design by **Stephen Burks** | Item code: **073006** | Weight **9,3 kg/21 lbs** | Volume **0,72 m³/25 cu ft** | COM (Customer Own Material): **m/5.00 yd** (plain fabric only)

Measurements



Collection: DALA takes inspiration from the artisanship and improvised seating arrangements of the developing world. Surface and structure merge in this versatile collection by Stephen Burks, each piece starting as a powder-coated frame of aluminum mesh through which DEDON's master weavers thread colorful strands of our revolutionary new ecological fiber.

Lounge chair: Comfortable, casual and generously proportioned, the DALA Lounge Chair comes with a color-coordinated back and seat cushion made with high-tech Batyline® fabric.

Frame: Aluminum

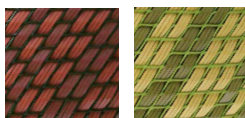
Finishing: Frame is electrostatic powder-coated. Fiber is High-Density Polyethylene (HDPE).

Characteristics: Colorful, distinctive, innovative, versatile, practical, ecological

Frame Maintenance: Clean with soft cloth and warm water. Contact with chlorinated pool water should be avoided. Areas splashed with chlorinated water should be cleaned with ordinary water.

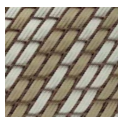
Cushion Maintenance: All cushion covers can be removed and washed.

Colors



532
fire

533
grass



534
stone

Additional Items



Cover

Fabrics

fire: **95073037735 + 95073005735**
grass: **95073037761 + 95073005761**
stone: **95073037762 + 95073005762**

Please see Fabric Options Fact Sheet

Deco cushions



Recommended deco cushions, ø40 cm + 50x50 cm

fire: 1x 95050088629 + 1x 95050082631 (curl red/chambray red)

grass: 1x 95050088511 + 1x 95050082630 (curl musk/chambray green)

stone: 1x 95050088613 + 1x 95050082632 (curl taupe/chambray noisette)

To learn more about DEDON, our collections and warranty policy, please visit our website –

www.dedon.de

0116

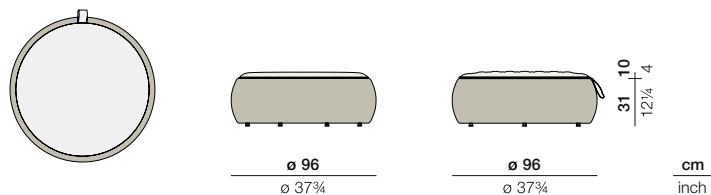
DEDON

DALA

Footstool / Coffee table

Design by **Stephen Burks** | Item code: **073037** | Weight **6,7 kg/15 lbs** | Volume **0,29 m³/10 cu ft** | COM (Customer Own Material): **/3.00 yd** (plain fabric only)

Measurements



Collection: DALA takes inspiration from the artisanship and improvised seating arrangements of the developing world. Surface and structure merge in this versatile collection by Stephen Burks, each piece starting as a powder-coated frame of aluminum mesh through which DEDON's master weavers thread colorful strands of our revolutionary new ecological fiber.

Footstool / Coffee table: The same diameter as the lounge chair, this comfortable footstool doubles as casual seating. And with its color-coordinated glass top, it can also be used as a coffee table.

Frame: Aluminum

Finishing: Frame is electrostatic powder-coated. Fiber is High-Density Polyethylene (HDPE). Tabletop is lacquered glass with satinated stripes.

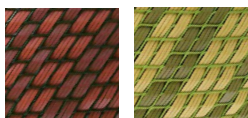
Characteristics: Colorful, distinctive, innovative, versatile, practical, ecological

Options: This item may be either used as coffee table (when glass top is applied) or footstool (when cushion is applied).

Frame Maintenance: Clean with soft cloth and warm water. Contact with chlorinated pool water should be avoided. Areas splashed with chlorinated water should be cleaned with ordinary water.

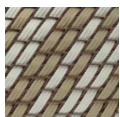
Cushion Maintenance: All cushion covers can be removed and washed.

Colors



532
fire

533
grass



534
stone

Additional Items



Cover

Fabrics

fire: 95073037735

grass: 95073037761

stone: 95073037762

Please see Fabric Options Fact Sheet

Tabletop

Glass fire
22273037313

Glass grass
22273037312

Glass stone
22273037314

To learn more about DEDON, our collections and warranty policy, please visit our website –

www.dedon.de

0116

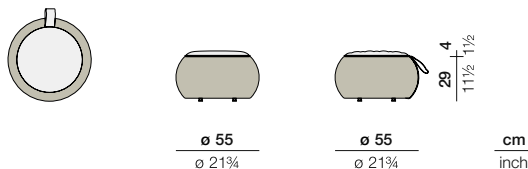
DEDON

DALA

Stool / Side table

Design by **Stephen Burks** | Item code: **073033** | Weight **3,3 kg/7 lbs** | Volume **0,09 m³/5 cu ft** | COM (Customer Own Material): **/2.00 yd** (plain fabric only)

Measurements



Collection: DALA takes inspiration from the artisanship and improvised seating arrangements of the developing world. Surface and structure merge in this versatile collection by Stephen Burks, each piece starting as a powder-coated frame of aluminum mesh through which DEDON's master weavers thread colorful strands of our revolutionary new ecological fiber.

Stool/Side table: Lightweight and easy to move around, this comfortable, low DALA stool is great for casual seating. With its color-coordinated glass top, it can also be used as a side table.

Frame: Aluminum

Finishing: Frame is electrostatic powder-coated. Fiber is High-Density Polyethylene (HDPE). Tabletop is lacquered glass with satinated stripes.

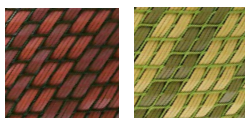
Characteristics: Colorful, distinctive, innovative, versatile, practical, ecological

Options: This item may be either used as side table (when glass top is applied) or stool (when cushion is applied).

Frame Maintenance: Clean with soft cloth and warm water. Contact with chlorinated pool water should be avoided. Areas splashed with chlorinated water should be cleaned with ordinary water.

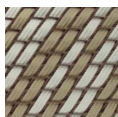
Cushion Maintenance: All cushion covers can be removed and washed.

Colors



532
fire

533
grass



534
stone

Additional Items



Cover

Fabrics

fire: 95073033735
grass: 95073033761
stone: 95073033762

Please see Fabric Options Fact Sheet

Tabletop

Glass fire
22273033313

Glass grass
22273033312

Glass stone
22273033314

To learn more about DEDON, our collections and warranty policy, please visit our website –

www.dedon.de

0116

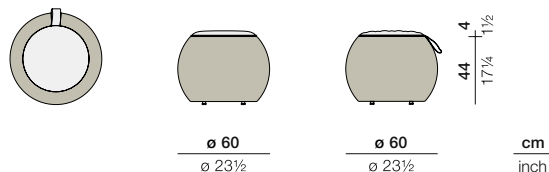
DEDON

DALA

Stool / Side table

Design by **Stephen Burks** | Item code: **073035** | Weight **4,5 kg/10 lbs** | Volume **0,16 m³/6 cu ft** | COM (Customer Own Material): **/2.00 yd** (plain fabric only)

Measurements



Collection: DALA takes inspiration from the artisanship and improvised seating arrangements of the developing world. Surface and structure merge in this versatile collection by Stephen Burks, each piece starting as a powder-coated frame of aluminum mesh through which DEDON's master weavers thread colorful strands of our revolutionary new ecological fiber.

Stool/Side table: Lightweight and easy to move around, this comfortable, high DALA stool is great for casual seating. With its color-coordinated glass top, it can also be used as a side table.

Frame: Aluminum

Finishing: Frame is electrostatic powder-coated. Fiber is High-Density Polyethylene (HDPE). Tabletop is lacquered glass with satinated stripes.

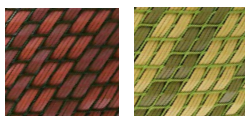
Characteristics: Colorful, distinctive, innovative, versatile, practical, ecological

Options: This item may be either used as side table (when glass top is applied) or stool (when cushion is applied).

Frame Maintenance: Clean with soft cloth and warm water. Contact with chlorinated pool water should be avoided. Areas splashed with chlorinated water should be cleaned with ordinary water.

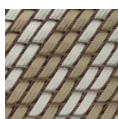
Cushion Maintenance: All cushion covers can be removed and washed.

Colors



532
fire

533
grass



534
stone

Additional Items



Cover

Fabrics

fire: 95073033735

grass: 95073033761

stone: 95073033762

Please see Fabric Options Fact Sheet

Tabletop

Glass fire
22273033313

Glass grass
22273033312

Glass stone
22273033314

To learn more about DEDON, our collections and warranty policy, please visit our website –

www.dedon.de

0116

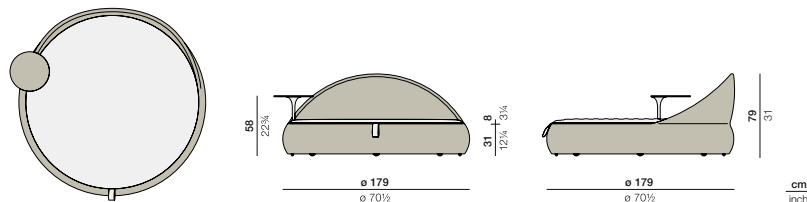
DEDON

DALA

Loveseat

Design by **Stephen Burks** | Item code: **073004** | Weight **30 kg/66 lbs** | Volume **2,51 m³/35 cu ft** | COM (Customer Own Material): **4 m/8.00 yd** (plain fabric only)

Measurements



Collection: DALA takes inspiration from the artisanship and improvised seating arrangements of the developing world. Surface and structure merge in this versatile collection by Stephen Burks, each piece starting as a powder-coated frame of aluminum mesh through which DEDON's master weavers thread colorful strands of our revolutionary new ecological fiber.

Loveseat: This spacious daybed has wheels underneath for smooth rotation, pull-out casters for easy mobility and a swiveling table featuring a premium teak tabletop.

Frame: Aluminum

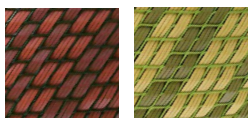
Finishing: Frame is electrostatic powder-coated. Fiber is High-Density Polyethylene (HDPE). The swiveling table of the DALA loveseat consists of a powder-coated aluminum post and a tabletop of premium teak.

Characteristics: Colorful, distinctive, innovative, versatile, practical, ecological

Frame Maintenance: Clean with soft cloth and warm water. Avoid contact with chlorinated pool water. Areas splashed with chlorinated water should be cleaned with ordinary water. Wash tabletop with warm water in which natural soap flakes have been dissolved or with DEDON's teak cleaner.

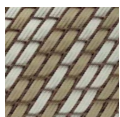
Cushion Maintenance: All cushion covers can be removed and washed.

Colors



532
fire

533
grass



534
stone

Additional Items



Cover

Fabrics

fire: 95073014735
grass: 95073014761
stone: 95073014762

Please see Fabric Options Fact Sheet

Deco cushions



Recommended deco cushions:

70 x 70 cm (95050086653 linen gray twisted)
70 x 70 cm (95050086652 linen warm gray)
60 x 60 cm (95050084653 linen gray twisted)
50 x 50cm (95050082652 linen warm gray)
50 x 50cm (95050082650 linen off white)
40 x 40 cm (95050081509 curl prestige)

To learn more about DEDON, our collections and warranty policy, please visit our website –

www.dedon.de

0116

DEDON