



# FENNEC

GABRIEL TEIXIDÓ

Resultado de una inteligente mezcla de diseño, confort y funcionalidad. Esta colección realizada con fibra Shintotex®, exclusiva de Point, se compone de mesas, sillas, sofás y sillones de gran resistencia y durabilidad.

This collection is the result of a smart mixture of design, comfort and functionality. Made with the exclusive Point's Shintotex®, it is made up of tables, chairs, sofas and armchairs. All resistant and durable.











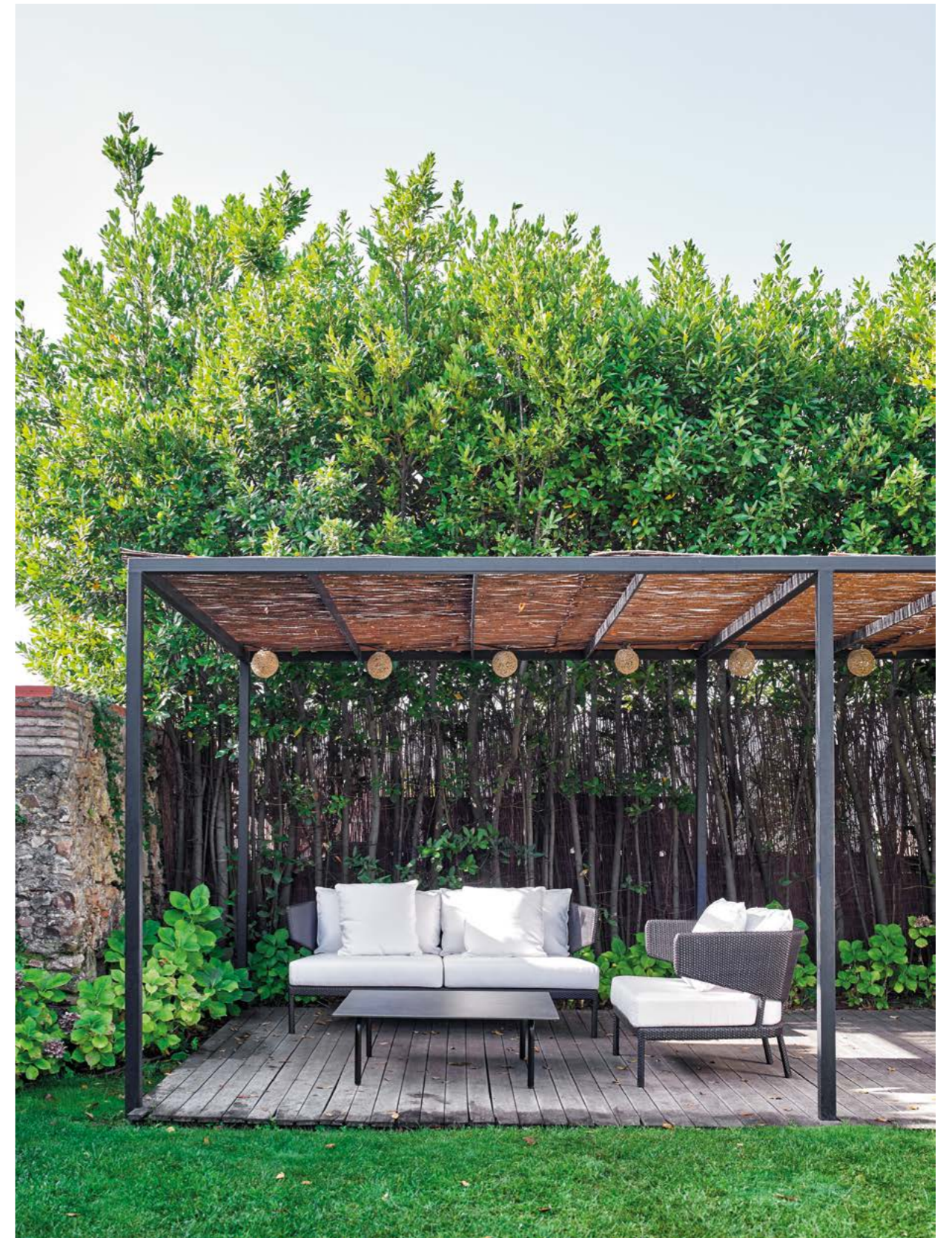
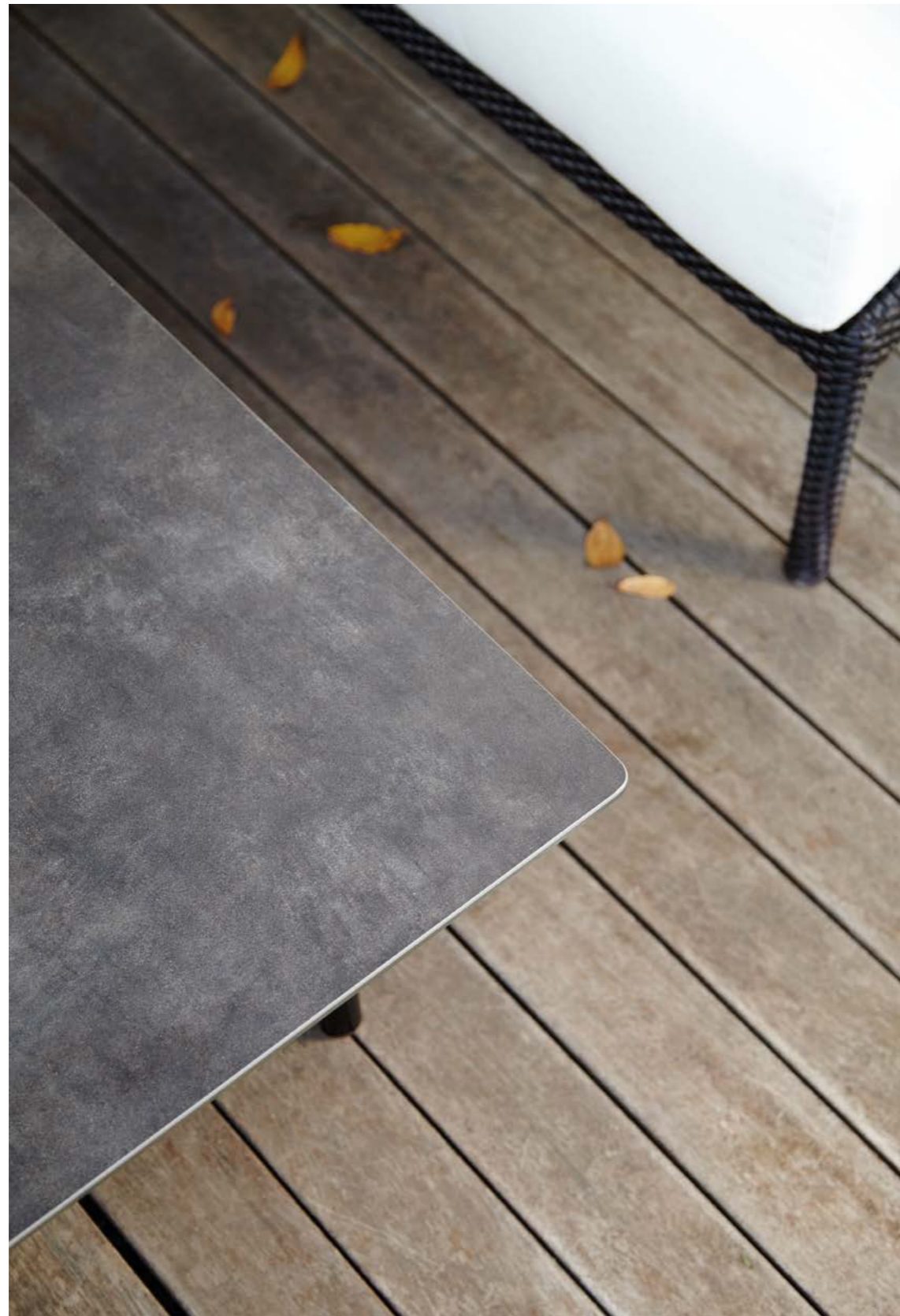












**FENNEC**

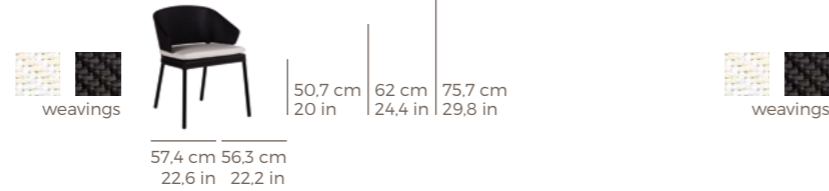
SILLA / CHAIR  
REF.: 74901



PESO / WEIGHT	9.5 kg / 20 lb
M <sup>3</sup>	0.32 m <sup>3</sup>
ESTRUCTURA / FRAME	aluminio lacado epoxi / epoxi lacquered aluminium
TRENZADO / WEAVINGS	flat oval 6 mm

**FENNEC**

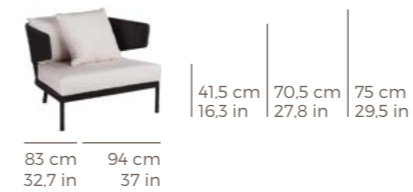
SILLÓN COMEDOR / DINNING ARMCHAIR  
REF.: 74906



PESO / WEIGHT	10 kg / 22 lb
M <sup>3</sup>	0.32 m <sup>3</sup>
ESTRUCTURA / FRAME	aluminio lacado epoxi / epoxi lacquered aluminium
TRENZADO / WEAVINGS	flat oval 6 mm

**FENNEC**

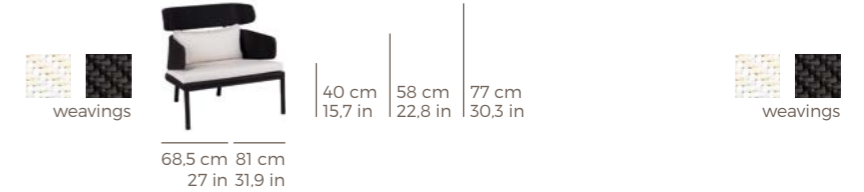
SILLÓN / ARMCHAIR  
REF.: 74945



PESO / WEIGHT	34.5 kg / 76 lb
M <sup>3</sup>	0.72 m <sup>3</sup>
ESTRUCTURA / FRAME	aluminio lacado epoxi / epoxi lacquered aluminium
TRENZADO / WEAVINGS	flat oval 6 mm
CUADRANTES / SCATTER CUSHIONS	1 ( 50 x 50 )

**FENNEC**

SILLÓN CLUB / CLUB ARMCHAIR  
REF.:74946



PESO / WEIGHT	22 kg / 48 lb
M <sup>3</sup>	0.54 m <sup>3</sup>
ESTRUCTURA / FRAME	aluminio lacado epoxi / epoxi lacquered aluminium
TRENZADO / WEAVINGS	flat oval 6 mm
CUADRANTES / SCATTER CUSHIONS	1 ( 60 x 32 )

**FENNEC**

MESA RINCÓN / CORNER TABLE  
REF.: 74956



PESO / WEIGHT	16 kg / 35 lb
M <sup>3</sup>	0.23 m <sup>3</sup>
ESTRUCTURA / FRAME	aluminio lacado epoxi / epoxi lacquered aluminium

**FENNEC**

MESA COMEDOR / DINNING TABLE  
REF.: 74910



PESO / WEIGHT	41 kg / 90 lb
M <sup>3</sup>	0.76 m <sup>3</sup>
ESTRUCTURA / FRAME	aluminio lacado epoxi / epoxi lacquered aluminium
TRENZADO / WEAVINGS	flat oval 6 mm

**FENNEC**

SOFÁ 2 / SOFA 2  
REF.: 74947



PESO / WEIGHT	42 kg / 92 lb
M <sup>3</sup>	1.31 m <sup>3</sup>
ESTRUCTURA / FRAME	aluminio lacado epoxi / epoxi lacquered aluminium
TRENZADO / WEAVINGS	flat oval 6 mm
CUADRANTES / SCATTER CUSHIONS	2 ( 50 x 50 )

**FENNEC**

SOFÁ 3 / SOFA 3  
REF.: 74949



PESO / WEIGHT	53.5 kg / 117 lb
M <sup>3</sup>	1.6 m <sup>3</sup>
ESTRUCTURA / FRAME	aluminio lacado epoxi / lacquered aluminium
TRENZADO / WEAVINGS	flat oval 6 mm
CUADRANTES / SCATTER CUSHIONS	3 ( 50 x 50 )

**FENNEC**

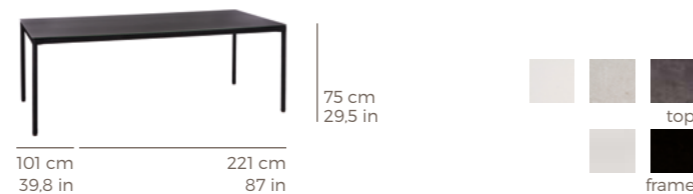
MESA COMEDOR / DINNING TABLE  
REF.: 74909



PESO / WEIGHT	72.5 kg / 159 lb
M <sup>3</sup>	1.62 m <sup>3</sup>
ESTRUCTURA / FRAME	aluminio lacado epoxi / epoxi lacquered aluminium
TRENZADO / WEAVINGS	flat oval 6 mm

**FENNEC**

MESA COMEDOR / DINNING TABLE  
REF.: 74908



PESO / WEIGHT	87.5 kg / 192 lb
M <sup>3</sup>	1.97 m <sup>3</sup>
ESTRUCTURA / FRAME	aluminio lacado epoxi / epoxi lacquered aluminium
TRENZADO / WEAVINGS	flat oval 6 mm

**FENNEC**

MESA CENTRO CUADRADA / SQUARE COFFEE TABLE  
REF.: 74953



PESO / WEIGHT	31.5 kg / 69 lb
M <sup>3</sup>	0.45 m <sup>3</sup>
ESTRUCTURA / FRAME	aluminio lacado epoxi / epoxi lacquered aluminium

**FENNEC**

MESA CENTRO RECTANGULAR / RECTANGULAR COFFEE TABLE  
REF.: 74954



PESO / WEIGHT	29.5 kg / 65 lb
M <sup>3</sup>	0.42 m <sup>3</sup>
ESTRUCTURA / FRAME	aluminio lacado epoxi / epoxi lacquered aluminium