

# FOLD

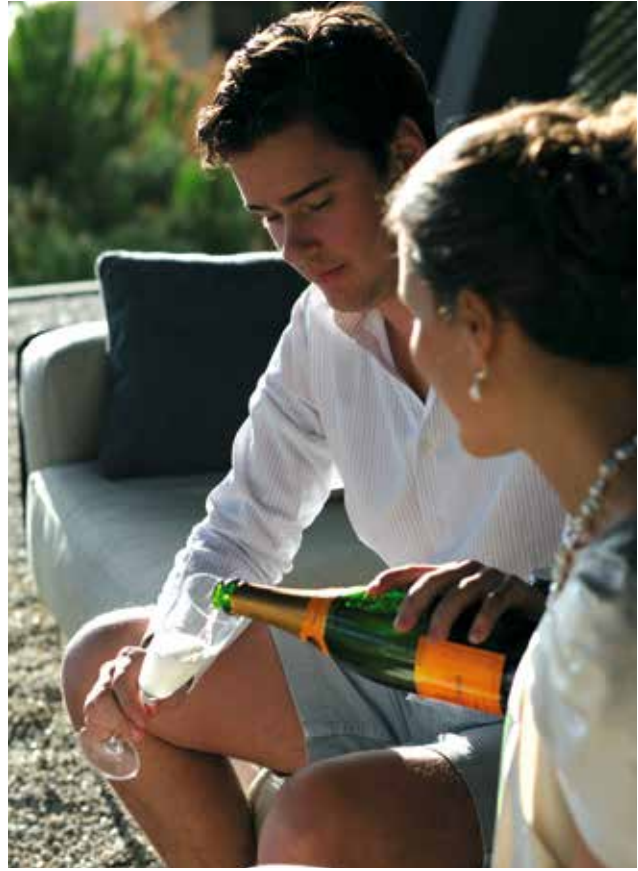


Design: Frank Boschman





FOLD















## FLD 100 LOUNGE ONE SEATER MODULE



	0,72 m <sup>3</sup>
	33 Kg
	8, 10, 12-14

BASE		STAINLESS STEEL ELECTRO POLISHED
SEAT		
COATED ALU	<input type="checkbox"/>	
COATED ALU	<input checked="" type="checkbox"/>	
CUSHIONS		

## FLD 70 LOUNGE MODULE



	0,51 m <sup>3</sup>
	24,3 Kg
	8-10,14

BASE		STAINLESS STEEL ELECTRO POLISHED
SEAT		
COATED ALU	<input type="checkbox"/>	
COATED ALU	<input checked="" type="checkbox"/>	
CUSHIONS		

## FLD 70 C LOUNGE CORNER MODULE



	0,65 m <sup>3</sup>
	29,7 Kg
	8-10,14

BASE		STAINLESS STEEL ELECTRO POLISHED
SEAT		
COATED ALU	<input type="checkbox"/>	
COATED ALU	<input checked="" type="checkbox"/>	
CUSHIONS		

## FLD 70 L LOUNGE LEFT MODULE



	0,67 m <sup>3</sup>
	29,6 Kg
	8-10,14

BASE		STAINLESS STEEL ELECTRO POLISHED
SEAT		
COATED ALU	<input type="checkbox"/>	
COATED ALU	<input checked="" type="checkbox"/>	
CUSHIONS		

# FOLD

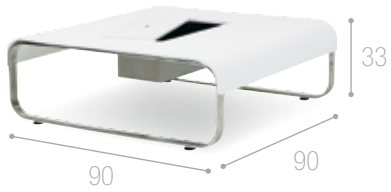
## FLD 70 R LOUNGE RIGHT MODULE



	0,67 m <sup>3</sup>
	29,6 Kg
	8-10,14

BASE		STAINLESS STEEL ELECTRO POLISHED
SEAT		
COATED ALU		
COATED ALU		
CUSHIONS		

## FLD 90 T LOUNGE TABLE



	0,29 m <sup>3</sup>
	19 Kg
	8-10,14

BASE		STAINLESS STEEL ELECTRO POLISHED
SEAT		
COATED ALU		
COATED ALU		

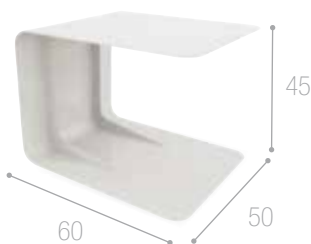
## FLD 70 T FOOTREST/LOW TABLE



	0,11 m <sup>3</sup>
	14,5 Kg
	13

BASE		STAINLESS STEEL ELECTRO POLISHED
TOP		
COATED ALU		
COATED ALU		
HPL		
CUSHIONS		

## FLD 60 T LOUNGE TABLE



	0,14 m <sup>3</sup>
	4,0 Kg
	-

COATED ALU	
COATED ALU	