

WICKER COLLECTION

MOOD

DESIGNED BY MANUTTI DESIGNER STUDIO + GERD COUCKHUYT



TECHNICAL SPECIFICATIONS MOOD COLLECTION



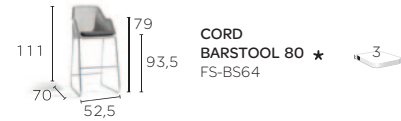
CORD CHAIR
FS-CH29

★



CORD 1S
FS-1S39

★



CORD BARSTOOL 80
FS-BS64

★



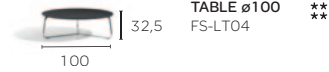
CORD LOUNGER
FS-LO56

★



CORD KIDDY CHAIR
FS-KC04

★



LOUNGE TABLE ø100
FS-LT04

**

**



LOUNGE TABLE ø80
FS-LT03

**

**



COFFEE TABLE ø60
FS-CT89

**

**



COFFEE TABLE ø42
FS-CT90

**

**

** AVAILABLE TABLETOPS

ACID ETCHED GLAS 10 mm



TRESPA® (HPL) 13 mm



CERAMIC 7 mm



FRAME

frame - structure - Gestell - soporte - telaio



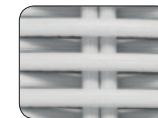
electropolished stainless steel
ESS

FINISHING

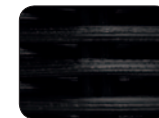
afwerking - finitions - Oberflächenbehandlung - acabado - rifinitura



Wicker
Seashell cord 2mm
col.26



Wicker
Off white cord 2mm
col.31



Wicker
Black cord 2mm
col.90

ALL DIMENSIONS ARE IN CM
FOR A COMPLETE OVERVIEW OF MATERIALS & FABRICS SEE PAGE 594
AND THE MANUTTI CARE LINE PRODUCTS SEE PAGE 618

AVAILABLE OPTIONS

★ cushions available

** tabletop available in:
Acid etched glass - Trespa®
and Ceramic

SPECIAL FEATURES

with wheels

unlimited adjustable back

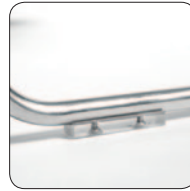
EXTRA INFO

seat cushion thickness

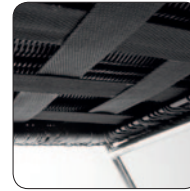
TECHNICAL SPECIFICATIONS MOOD COLLECTION

CHARACTERISTICS

kenmerken - spécificités - Eigenschaften - características - caratteristiche



TRANSPARENT ANTI-WEAR GLIDER



SEAT REINFORCEMENT
(for extra strength and comfort)



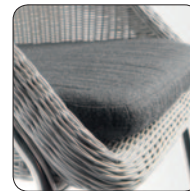
INTEGRATED WHEELS IN NYLON (PA)
(lounger)



AUTOMATIC HANDLE TO ADJUST HEADREST
(lounger)



ADJUSTABLE HEADREST UNLIMITED POSITIONS
(lounger)



CUSHIONS

MAINTENANCE

onderhoud - maintenance - Pflege - mantenimiento - manutenzione



WOVEN & TEXTILE CLEANER

Cleans braided PVC and Batyline® used in the woven seats and supports of Manutti garden furniture. Not suitable for fabrics.



STAINLESS STEEL CLEANER & RESTORER

Cleans stainless steel and restores its original beauty. Makes the surface resistant to dirt and moisture.



STAINLESS STEEL WAX PROTECTOR

Removes superficial oxidation deposits on stainless steel, and prevents oxidation spots on your furniture.

MATCHING ACCESSORIES

bijpassende accessoires - accessoires assortis - passende Zubehör
accesorios a juego - accessori coordinati

OUTDOOR RUGS



OUTDOOR LIGHTING



OUTDOOR SIDETABLES



PLANTERS / PEDESTALS



UMBRELLAS



MATCHING TABLES WITH MOOD CHAIR + BARSTOOL

Luna (ANA / PCA)

frame col. ANA FB F10

Table heights see page 476



max. number of seats per table + available dimensions

10+2 240-360 x 100 (A+B)

Quarto (ANA / PCA)

frame col. ANA F7 FB F9 F10 F11

Table heights see page 484



(A) (B)

max. number of seats per table + available dimensions

8+2 270 x 105 (A)
 6+2 215 x 105 (A) / 210 x 90 (A)
 4+2 150 x 90 (A+B) / 130 x 75 (A+B)
 4 105 x 105 (A+B) / 90 x 90 (A+B) / 75 x 75 (A+B)

Lucca (ANA)

frame col. ANA

Table heights see page 488



max. number of seats per table + available dimensions

6+2 270 x 105 (A)

Trento (STS / ESS)

frame col. STS ESS

Table heights see page 492



(A) (B)

max. number of seats per table + available dimensions

8+2 300 x 100 (A) / 270 x 105 (A)
 6+2 215 x 105 (A) / 210 x 90 (A)
 4+2 150 x 90 (A+B) / 130 x 75 (A+B)
 4 105 x 105 (A+B) / 90 x 90 (A+B) / 75 x 75 (A+B)

Lugano (STS / ESS)

frame col. STS ESS

Table heights see page 496



max. number of seats per table + available dimensions

8+2 270 x 100
 6+2 240 x 100 / 220 x 100 / 200 x 100
 4+2 180 x 90 / 160 x 90 / 140 x 90
 8 160 x 160 / 152 x 152
 4 100 x 100 / 90 x 90

Prato (PWI)

frame col. FB F8 F9 F10 F11

Table heights see page 504



max. number of seats per table + available dimensions

6+2 270 x 107
 6 215 x 107

Lecco (TEAK)

frame T

Table heights see page 512



max. number of seats per table + available dimensions

10+2 300 x 115
 6+2 215 x 105
 4+2 150 x 90 / 130 x 75
 4 90 x 90 / 75 x 75

Asti (AGED TEAK)

frame AT

Table heights see page 516



max. number of seats per table + available dimensions

8+2 345 x 107
 6+2 248 x 107

Napoli (PCA / POA)

frame col. F7 FB F9 F10 POA

Table heights see page 544



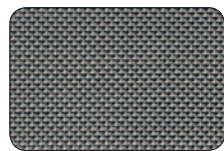
(A) (B)

max. number of seats per table + available dimensions

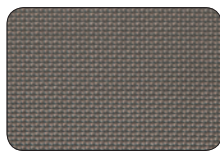
4 60 x 60 / 75 x 75 / 90 x 90 (A+B)
 4 ø 81(A+B)

OVERVIEW FABRICS UPHOLSTERY / UMBRELLAS

TEXTILES (BATYLINE®)



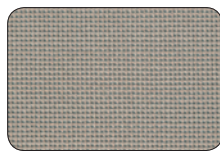
GRANITE GREY
col.T2



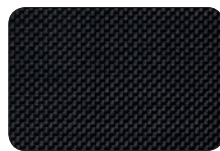
BRONZE
col.T3



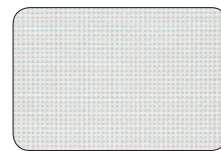
BLACK
col.T4



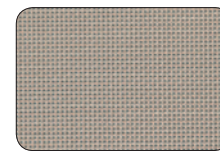
LINEN
col.T5



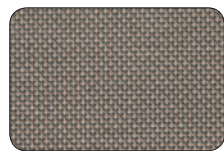
BLACK
col.T7



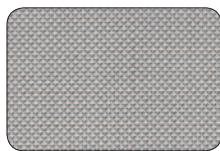
WHITE
col.T8



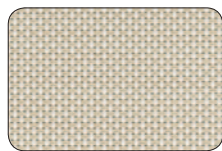
FLAX
col.T9



MOCCA
col.T10



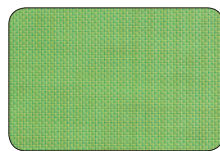
SAND
col.T11



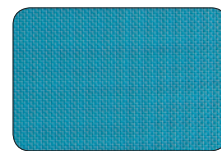
ECRÚ
col.T12



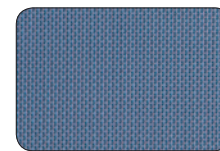
ORANGE
col.T15



GREEN
col.T17

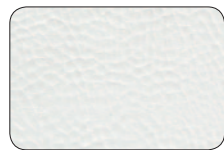


TURQUOISE
col.T18



LAVENDER
col.T19

NAUTIC



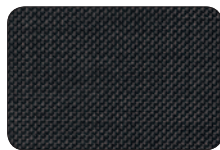
NAUTIC LEATHER
WHITE
col.33



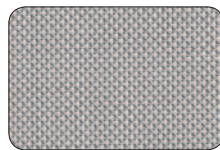
NAUTIC FABRIC
PEBBLE
col.25



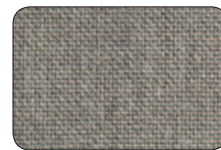
NAUTIC FABRIC
SPECKLE
col.29



NAUTIC TEXTILES
BLACK
col.T6

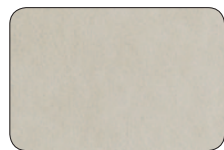


NAUTIC TEXTILES
SAND
col.T11



NAUTIC FABRIC
TAUPEGREY
col.79

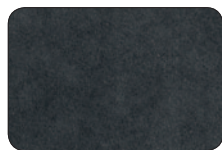
NAUTIC ALCANTARA®



SAND
col.61



ASH GREY
col.69



ANTHRACITE
col.69

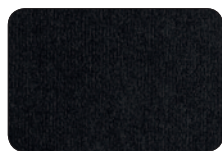
NAUTIC TERRY



SAND
col.15



PIETRA
col.16



NERO
col.17

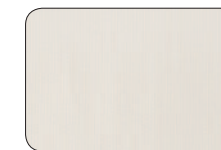


ORANGE
col.18



LIME
col.19

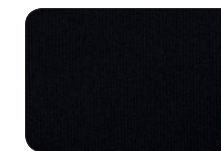
UMBRELLAS



SUNBRELLA® CANVAS
col.109



SUNBRELLA® TAUPE
col.181



SUNBRELLA® BLACK
col.110

OVERVIEW FABRICS CUSHIONS



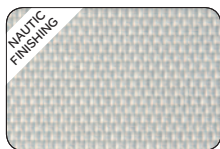
READY TO SIT

With ready to sit the furniture is delivered with the standard cushion set. We still want to give our customers the chance to personalise their furniture and pick the colour of their choice. In this case the customer will only have to order a cushion cover. Custom cushion covers have a delivery time of 5-6 weeks.

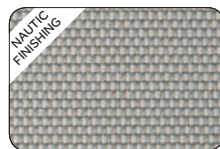
ALL WEATHER LOTUS



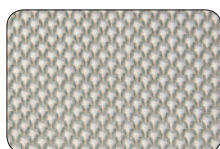
COAL BLACK
col.30



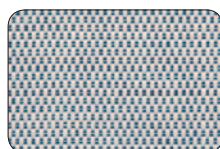
WHITE GREY
col.31



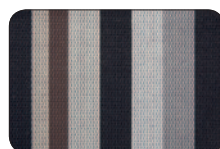
GREY QUARTZ
col.32



WHITE SAND
col.38



WHITE BLUE
col.39

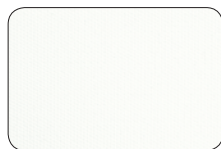


DECO STRIPES
col.99
(only for 40x40)

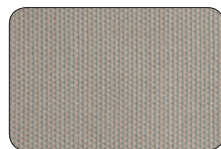


THE LOTUS EFFECT: this technology is based on the selfcleaning, water, dirt & oil repellent characteristics of the lotus leaves.

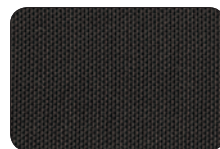
ALL WEATHER BASIC



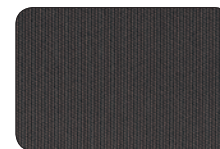
WHITE
col.02



SILVER GREY
col.80



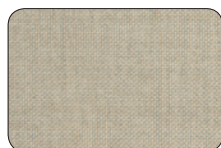
EBONY
col.86



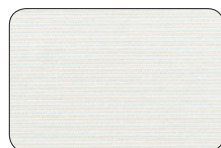
DARK GREY
col.63

(only for certain collections)

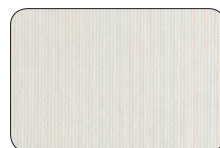
ALL WEATHER SUNBRELLA®



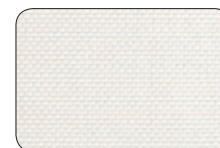
LINEN
col.04



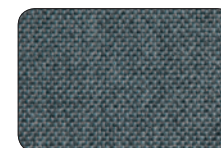
NATURAL
col.05



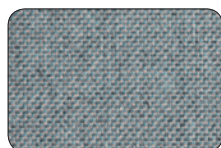
CANVAS
col.09



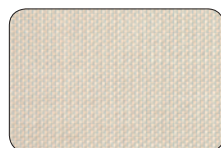
SOFT WHITE
col.12



SOFT DARK PETROL BLUE
col.13



SOFT LIGHT PETROL BLUE
col.14



SOFT BEIGE
col.24



TAUPE
col.41



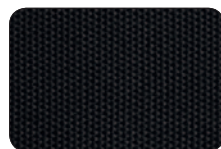
SHELL WHITE
col.70



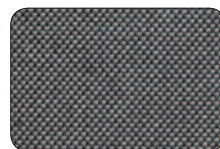
QUARTZ
col.72



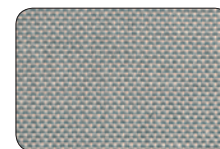
SOFT SHINGLE GREY
col.73



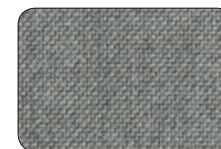
CHARCOAL
col.74



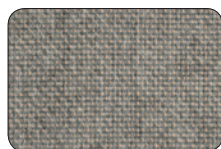
SOFT MINK BROWN
col.76



SOFT METALLIC GREY
col.77



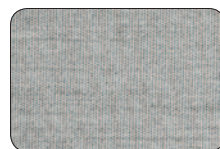
SOFT FLANEL
col.78



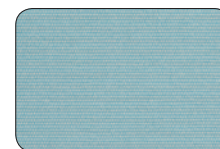
SOFT TAUPEGREY
col.79



ANTHRACITE
col.87



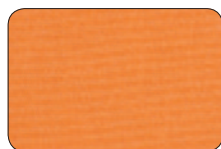
SKY GREY
col.88



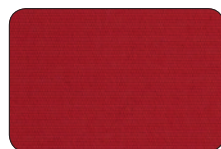
MINERAL BLUE
col.42



GREEN
col.44



SOFT TUSCANY
col.75



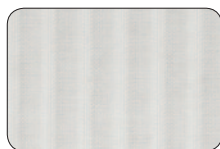
RED
col.90



MAUVE
col.96

ALL WEATHER SUNBRELLA®

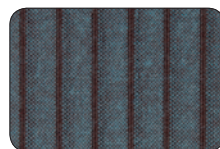
ONLY AVAILABLE FOR DECO CUSHIONS



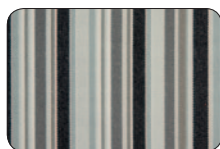
RIBBED NATURAL
col.26



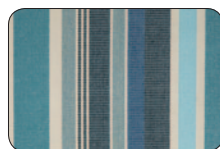
RIBBED BLACK
col.27



RIBBED BLUE
col.28



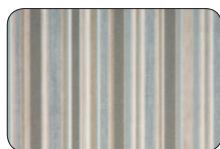
MIXED GREY BLACK STRIPES
col.47



MIXED BLUE STRIPES
col.48



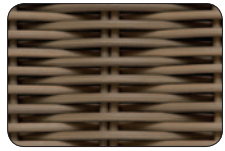
RED STRIPES
col.91



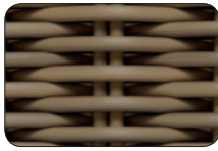
MIXED STRIPES
col.98

OVERVIEW MATERIALS FINISHING + FRAME

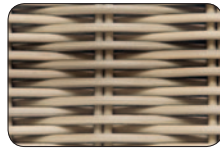
WICKER



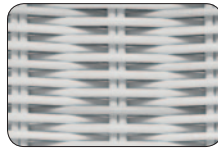
CAMEL CORD
2-2,8mm
col.23



CAMEL CORD 3,7mm
col.23



SEASHELL CORD 2mm
col.26



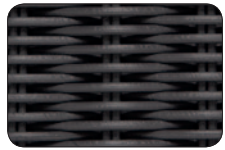
OFF WHITE CORD 2-2,8mm
col.31



JAVA BROWN CORD 2mm
col.41



HAZEL CORD 2mm
col.44



THUNDER GREY CORD 2mm
col.83



OLD GREY CORD 5mm
col.84



OLD GREY CORD 8mm
col.84



NATURAL GREY CORD 4,5mm
col.88



BLACK CORD 2mm
col.90

598

METALS - POWDER COATED ALUMINIUM (PCA)



BLACK
PCA F7



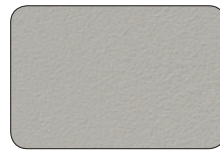
WHITE
PCA F8



FLAX
PCA F9



LAVA
PCA F10



SHINGLE
PCA F11

TEAK



TEAK
T



AGED TEAK
AT

METALS - ALUMINIUM

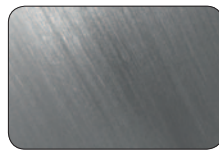


ANODISED ALUMINIUM
ANA

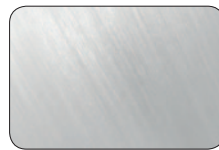


POLISHED ALUMINIUM
POA

METALS - STAINLESS STEEL

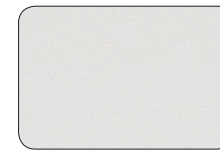


STAINLESS STEEL
STS

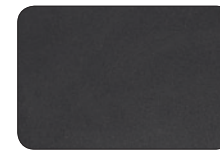


ELECTRO-POLISHED STAINLESS STEEL
ESS

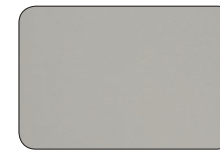
METALS - WROUGHT IRON



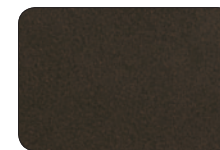
WHITE
PWI F8



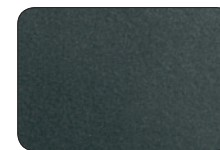
LAVA
PWI F10



SHINGLE
PWI F11



RUBBED BROWN
col.40



ANTHRACITE
col.89

OVERVIEW MATERIALS TABLETOPS

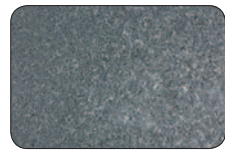
STONE



BLUESTONE LIGHT
BL



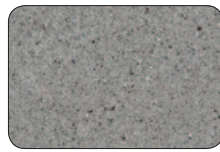
BLUESTONE DARK
BD



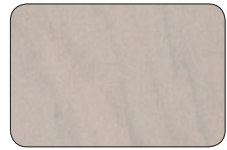
GRANITE DARK
GD



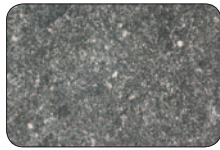
GRANITE POLISH
GP



GRANITE TINTA
GT



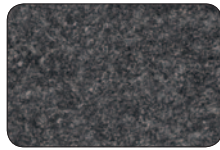
GRANITE CARAMEL
GC



SATINGO BLUE
SB



SATINGO SAND
SS



SATINGO NERO
SN



MARBLE WHITE
MW

SILESTONE®

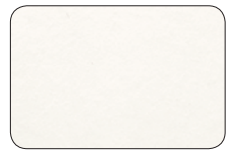


TAUPE
SIT



BLACK
SIB

TRESPA® (HPL)



WHITE
TRW



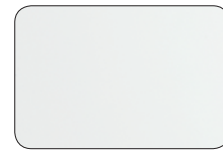
STONE GREY
TRS



BLACK
TRB

ACID ETCHED GLASS

599



WHITE
GLW



TAUPE
GLT

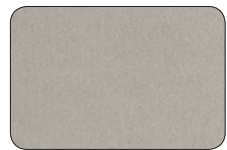


SAND
GLS

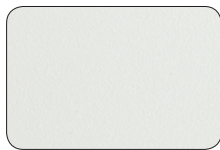


BLACK
GLB

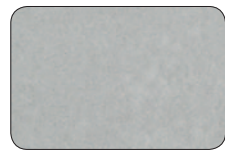
CERAMIC



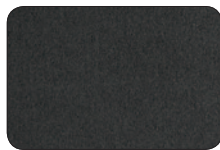
CLOUD GREY
CEG



WHITE
CEW



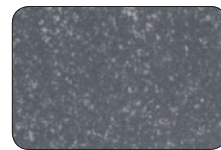
SILK GREY
CES



CHARCOAL
CEB

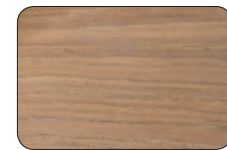


QUARTZ
CEQ

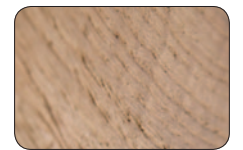


BLUESTONE
CEP

TEAK



TEAK
T



AGED TEAK
AT