

DEDON

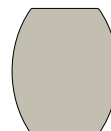
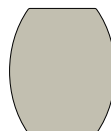
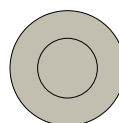
**DALA** LANTERN & PLANTER

# DALA

## Planter

Design by **Stephen Burks** | Item code: **073051** | Weight **8 kg/18 lbs** | Volume **0,48 m³/17 cu ft**

### Measurements



ø 76  
ø 30

ø 76  
ø 30

83  
32 1/2  
cm  
inch

**Collection:** Designed using the same mesh structure and environmentally-friendly fiber as the DALA furniture, the DALA planter and lantern are the perfect complement to any DEDON collection. Each piece is hand-woven using richly textured strands of DEDON's groundbreaking new ecological fiber.

**Planter:** This DALA planter brings subtle sophistication to any outdoor living room. It features a rotomolded internal pot.

**Frame:** Aluminum

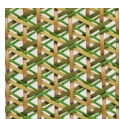
**Finishing:** Frame is electrostatic powder-coated. Fiber is DEDON ecological fiber, created from mix of recycled food- and drink packaging and High-Density Polyethylene (HDPE).

**Characteristics:** Colorful, distinctive, innovative, versatile, practical, ecological

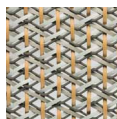
**Options:** An additional hanger is available to hang the planter

**Frame Maintenance:** Clean with soft cloth and warm water. Contact with chlorinated pool water should be avoided. Areas splashed with chlorinated water should be cleaned with ordinary water.

### Fiber Standard



533  
grass



534  
stone

### Additional Items



Removable inner planter



Hanger for lantern  
**073090000**

To learn more about DEDON, our collections and warranty policy, please visit our website –

[www.dedon.de](http://www.dedon.de)

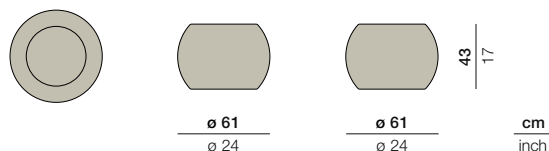
**DEDON**

# DALA

## Planter

Design by **Stephen Burks** | Item code: **073050** | Weight **5 kg/12 lbs** | Volume **0,17 m³/6 cu ft**

### Measurements



**Collection:** Designed using the same mesh structure and environmentally-friendly fiber as the DALA furniture, the DALA planter and lantern are the perfect complement to any DEDON collection. Each piece is hand-woven using richly textured strands of DEDON's groundbreaking new ecological fiber.

**Planter:** This DALA planter brings subtle sophistication to any outdoor living room. It features a rotomolded internal pot.

**Frame:** Aluminum

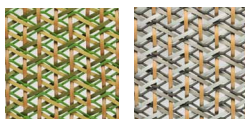
**Finishing:** Frame is electrostatic powder-coated. Fiber is DEDON ecological fiber, created from mix of recycled food- and drink packaging and High-Density Polyethylene (HDPE).

**Characteristics:** Colorful, distinctive, innovative, versatile, practical, ecological

**Options:** An additional hanger is available to hang the planter

**Frame Maintenance:** Clean with soft cloth and warm water. Contact with chlorinated pool water should be avoided. Areas splashed with chlorinated water should be cleaned with ordinary water.

### Fiber Standard



533  
grass

534  
stone

### Additional Items



Removable inner planter



Hanger for lantern  
**073090000**

To learn more about DEDON, our collections and warranty policy, please visit our website –

[www.dedon.de](http://www.dedon.de)

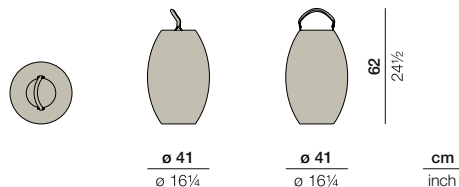
**DEDON**

# DALA

## Lantern

Design by **Stephen Burks** | Item code: **073062** | Weight **2,5 kg/6 lbs** | Volume **0,11 m<sup>3</sup>/4 cu ft**

### Measurements



**Collection:** Designed using the same mesh structure and environmentally-friendly fiber as the DALA furniture, the DALA planter and lantern are the perfect complement to any DEDON collection. Each piece is hand-woven using richly textured strands of DEDON's groundbreaking new ecological fiber.

**Lantern:** This DALA lantern features open weaving to let candlelight through. Elegant, man-made leather handles allow to you hang it or place it on the ground.

**Frame:** Aluminum

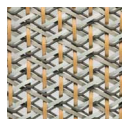
**Finishing:** Frame is electrostatic powder-coated. Fiber is DEDON ecological fiber, created from mix of recycled food- and-drink packaging and High-Density Polyethylene (HDPE).

**Characteristics:** Colorful, distinctive, innovative, versatile, practical, ecological

**Options:** An additional hanger is available to hang the lantern

**Frame Maintenance:** Clean with soft cloth and warm water. Contact with chlorinated pool water should be avoided. Areas splashed with chlorinated water should be cleaned with ordinary water.

### Fiber Standard



534  
stone

### Additional Items



Candle holder



Hanger for lantern  
**073092000**

To learn more about DEDON, our collections and warranty policy, please visit our website –

[www.dedon.de](http://www.dedon.de)

**DEDON**

# DALA

## Lantern

Design by **Stephen Burks** | Item code: **073061** | Weight **2 kg/5 lbs** | Volume **0,06 m<sup>3</sup>/2 cu ft**

### Measurements



**Collection:** Designed using the same mesh structure and environmentally-friendly fiber as the DALA furniture, the DALA planter and lantern are the perfect complement to any DEDON collection. Each piece is hand-woven using richly textured strands of DEDON's groundbreaking new ecological fiber.

**Lantern:** This DALA lantern features open weaving to let candlelight through. Elegant, man-made leather handles allow to you hang it or place it on the ground.

**Frame:** Aluminum

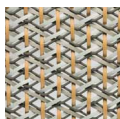
**Finishing:** Frame is electrostatic powder-coated. Fiber is DEDON ecological fiber, created from mix of recycled food- and drink packaging and High-Density Polyethylene (HDPE).

**Characteristics:** Colorful, distinctive, innovative, versatile, practical, ecological

**Options:** An additional hanger is available to hang the lantern

**Frame Maintenance:** Clean with soft cloth and warm water. Contact with chlorinated pool water should be avoided. Areas splashed with chlorinated water should be cleaned with ordinary water.

### Fiber Standard



534  
stone

### Additional Items



Candle holder



Hanger for lantern  
**073092000**

To learn more about DEDON, our collections and warranty policy, please visit our website –

[www.dedon.de](http://www.dedon.de)

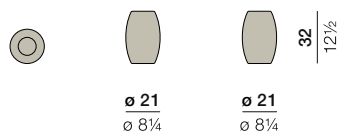
**DEDON**

# DALA

## Lantern

Design by **Stephen Burks** | Item code: **073060** | Weight **1 kg/3 lbs** | Volume **0,02 m³/1 cu ft**

### Measurements



**Collection:** Designed using the same mesh structure and environmentally-friendly fiber as the DALA furniture, the DALA planter and lantern are the perfect complement to any DEDON collection. Each piece is hand-woven using richly textured strands of DEDON's groundbreaking new ecological fiber.

**Lantern:** This DALA lantern features open weaving to let candlelight through.

**Frame:** Aluminum

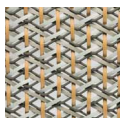
**Finishing:** Frame is electrostatic powder-coated. Fiber is DEDON ecological fiber, created from mix of recycled food- and drink packaging and High-Density Polyethylene (HDPE).

**Characteristics:** Colorful, distinctive, innovative, versatile, practical, ecological

**Options:** An additional hanger is available to hang the lantern

**Frame Maintenance:** Clean with soft cloth and warm water. Contact with chlorinated pool water should be avoided. Areas splashed with chlorinated water should be cleaned with ordinary water.

### Fiber Standard



534  
stone

### Additional Items



Candle holder



Hanger for lantern  
**073091000**

To learn more about DEDON, our collections and warranty policy, please visit our website –

[www.dedon.de](http://www.dedon.de)

**DEDON**