

DEDON

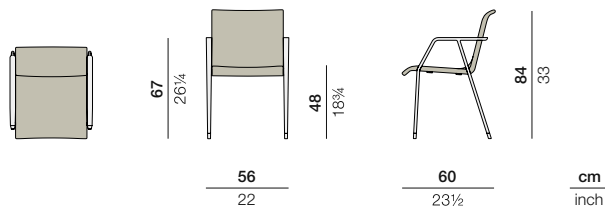
WA

WA

Armchair

Design by **Toan Nguyen** | Item code: **060x001** | Weight **7,5 kg/18 lbs** | Volume **0,29 m³/10 cu ft** | COM (Customer Own Material): to be determined

Measurements



Collection: The dramatic interplay of angles and curves gives the WA dining collection its unique “running” profile — lean, agile, muscular and seemingly in motion. A triumph of engineering, two years in development, WA bears all the hallmarks of its creator, Toan Nguyen, a designer renowned for his technical mastery and refined contemporary sensibility.

Armchair: Lightweight yet sturdy, the WA armchair features a sophisticated, skin-like weave. A special powder-coating makes it extra-resistant to scuffing.

Frame: High-precision die-cast aluminum

Finishing: Electrostatic powder-coated in a color similar to that of the fiber. Woven with a unique profile of DEDON fiber.

Characteristics: Minimalist, modern, refined, sophisticated, specially-coated, lightweight, strong

Frame Maintenance: Clean with a soft cloth and warm water.

Cushion Maintenance:

Color



098
lipari

099
vulcano

Additional Items



Cover

Fabrics

Item code: **95600001**

95600001700
Cool cotton white

To learn more about DEDON, our collections and warranty policy, please visit our website –

www.dedon.de

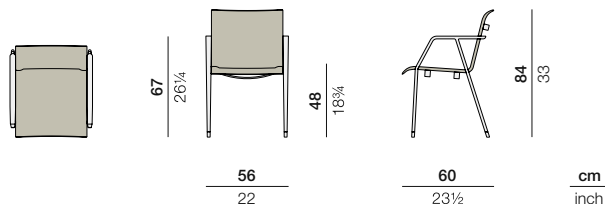
DEDON

WA

Armchair, textile

Design by **Toan Nguyen** | Item code: **060x002** | Weight **7,5 kg/15 lbs** | Volume **0,29 m³/10 cu ft** | COM (Customer Own Material): to be determined

Measurements



Collection: The dramatic interplay of angles and curves gives the WA dining collection its unique “running” profile — lean, agile, muscular and seemingly in motion. A triumph of engineering, two years in development, WA bears all the hallmarks of its creator, Toan Nguyen, a designer renowned for his technical mastery and refined contemporary sensibility.

Armchair, textile: Lightweight yet sturdy, the sling version of the WA armchair features a sophisticated, skin-like weave. A special powder-coating makes it extra-resistant to scuffing.

Frame: High-precision die-cast aluminum

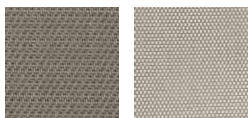
Finishing: Electrostatic powder-coated in a color similar to that of the textile seat. Textile stretched over an aluminum frame.

Characteristics: Minimalist, modern, refined, sophisticated, specially-coated, lightweight, strong

Frame Maintenance: Clean with a soft cloth and warm water.

Cushion Maintenance:

Color



625
sail taupe

633
sail dove

Additional Items

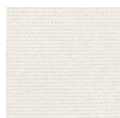


Cover

Fabrics

Item code: **95600001**

95600001700
Cool cotton white



637
sail salt

To learn more about DEDON, our collections and warranty policy, please visit our website –

www.dedon.de

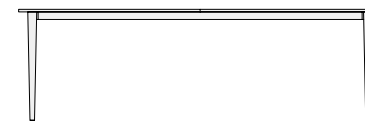
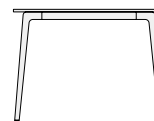
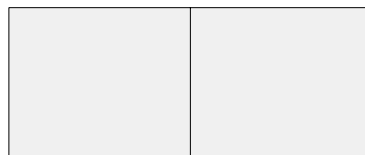
DEDON

WA

Dining table

Design by **Toan Nguyen** | Item code: **060x070** | Weight **102 kg/225 lbs** | Volume **1,78 m³/63 cu ft**

Measurements



74
29¼

100
39¼

240
94½

cm
inch



Collection: The dramatic interplay of angles and curves gives the WA dining collection its unique “running” profile — lean, agile, muscular and seemingly in motion. A triumph of engineering, two years in development, WA bears all the hallmarks of its creator, Toan Nguyen, a designer renowned for his technical mastery and refined contemporary sensibility.

Dining table: Both the stainless steel tabletop and the elegantly tapered cast-aluminum legs of this WA dining table are covered in a special powder-coating that makes them extra-resistant to scuffing.

Frame: Table top consists of stainless steel; legs consist of die-cast powder-coated aluminum

Finishing: Electrostatic powder-coated

Characteristics: Minimalist, modern, refined, sophisticated, specially-coated, lightweight, strong

Frame Maintenance: Clean with a soft cloth and warm water.

Color



001
white



098
lipari



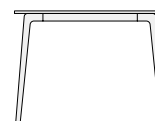
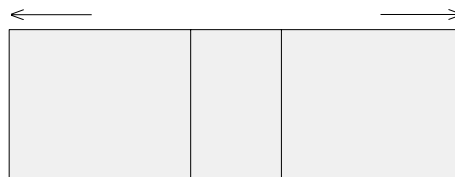
099
vulcano

Additional Items

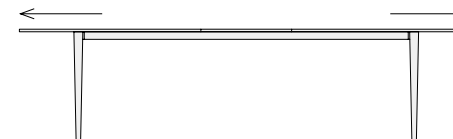


Cover

Extendable



100
39¼



300
118

74
29¼

cm
inch

To learn more about DEDON, our collections and warranty policy, please visit our website –

www.dedon.de

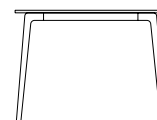
DEDON

WA

Dining table

Design by **Toan Nguyen** | Item code: **060x066** | Weight **65 kg/144 lbs** | Volume **1,48 m³/53 cu ft**

Measurements



74
29¼

100
39¼

200
78¾

cm
inch



Collection: The dramatic interplay of angles and curves gives the WA dining collection its unique “running” profile — lean, agile, muscular and seemingly in motion. A triumph of engineering, two years in development, WA bears all the hallmarks of its creator, Toan Nguyen, a designer renowned for his technical mastery and refined contemporary sensibility.

Dining table: Both the stainless steel tabletop and the elegantly tapered cast-aluminum legs of this WA dining table are covered in a special powder-coating that makes them extra-resistant to scuffing.

Frame: Table top consists of stainless steel; legs consist of die-cast powder-coated aluminum

Characteristics: Minimalist, modern, refined, sophisticated, specially-coated, lightweight, strong

Frame Maintenance: Clean with a soft cloth and warm water.

Color



001
white



098
lipari



099
vulcano

Additional Items



Cover

To learn more about DEDON, our collections and warranty policy, please visit our website –

www.dedon.de

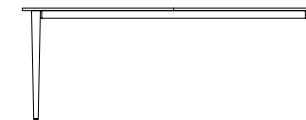
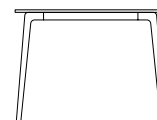
DEDON

WA

Dining table

Design by **Toan Nguyen** | Item code: **060x068** | Weight **92 kg/203 lbs** | Volume **1,48 m³/53 cu ft**

Measurements



74
29¼

100
39¼

200
78¾

cm
inch

Collection: The dramatic interplay of angles and curves gives the WA dining collection its unique “running” profile — lean, agile, muscular and seemingly in motion. A triumph of engineering, two years in development, WA bears all the hallmarks of its creator, Toan Nguyen, a designer renowned for his technical mastery and refined contemporary sensibility.

Dining table: Both the stainless steel tabletop and the elegantly tapered cast-aluminum legs of this WA dining table are covered in a special powder-coating that makes them extra-resistant to scuffing.

Frame: Table top consists of stainless steel; legs consist of die-cast powder-coated aluminum

Characteristics: Minimalist, modern, refined, sophisticated, specially-coated, lightweight, strong

Frame Maintenance: Clean with a soft cloth and warm water.

Color



001
white



098
lipari



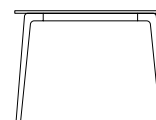
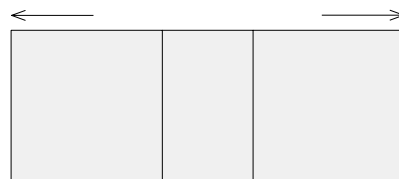
099
vulcano

Additional Items

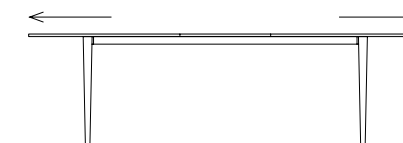


Cover

Extendable



100
39¼



260
102¼

74
29¼

cm
inch

To learn more about DEDON, our collections and warranty policy, please visit our website –

www.dedon.de

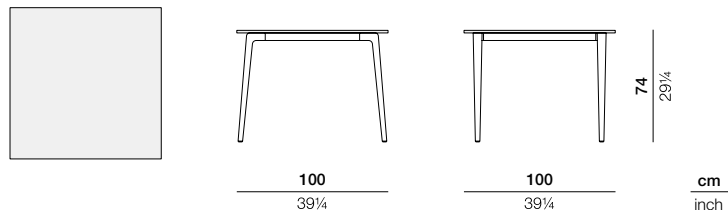
DEDON

WA

Dining table

Design by **Toan Nguyen** | Item code: **060x076** | Weight **40 kg/89 lbs** | Volume **0,74 m³/26 cu ft**

Measurements



Collection: The dramatic interplay of angles and curves gives the WA dining collection its unique “running” profile — lean, agile, muscular and seemingly in motion. A triumph of engineering, two years in development, WA bears all the hallmarks of its creator, Toan Nguyen, a designer renowned for his technical mastery and refined contemporary sensibility.

Dining table: Both the stainless steel tabletop and the elegantly tapered cast-aluminum legs of this WA dining table are covered in a special powder-coating that makes them extra-resistant to scuffing.

Frame: Table top consists of stainless steel; legs consist of die-cast powder-coated aluminum

Characteristics: Minimalist, modern, refined, sophisticated, specially-coated, lightweight, strong

Frame Maintenance: Clean with a soft cloth and warm water.

Color



001
white

098
lipari

Additional Items



Cover



099
vulcano

To learn more about DEDON, our collections and warranty policy, please visit our website –

www.dedon.de

DEDON