

DEDON

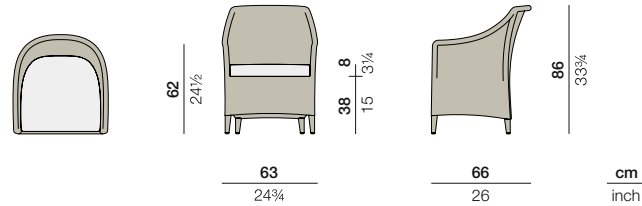
SUMMERLAND

SUMMERLAND

Armchair

Design by **Richard Frinier** | Item code: **069001** | Weight **7 kg/15 lbs** | Volume **0,36 m³/13 cu ft** | COM (Customer Own Material): **0,90 m/1.00 yd** (plain fabric only)

Measurements



Collection: With its tapering lines, gracious curves and gently arching armrests, SUMMERLAND by Richard Frinier blends into even the most traditional of settings. Yet with its clean form and subtly stylish details – including externalized rear supports and exposed, powder-coated die-cast aluminum legs – the collection looks right at home in modern settings as well.

Armchair: Hand-woven from top to base in an artfully subtle, textured weave, the SUMMERLAND Armchair features thick seat and distinctive, externalized rear supports.

Frame: Aluminum

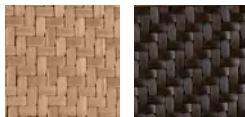
Finishing: Electrostatic powder-coated in a color similar to that of the fiber

Characteristics: Traditional yet modern, subtle yet distinctive, elegant, versatile

Frame Maintenance: Clean with a soft cloth and warm water.

Cushion Maintenance: All cushion covers can be removed and washed except those of man-made leather. To clean leather covers, please use a soft cloth and warm water.

Fiber Standard



066
bleach

082
tamari

Additional Items



Cover

Fabrics

Item code: **95069001**

Please see Fabric Options Fact Sheet

To learn more about DEDON, our collections and warranty policy, please visit our website –

www.dedon.de

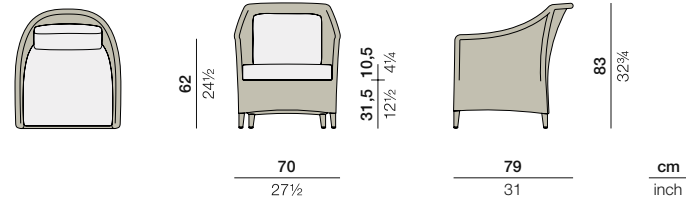
DEDON

SUMMERLAND

Lounge chair

Design by **Richard Frinier** | Item code: **069005** | Weight **7,5 kg/17 lbs** | Volume **0,46 m³/16 cu ft** | COM (Customer Own Material): **1,80 m/2.00 yd** (plain fabric only)

Measurements



Collection: With its tapering lines, gracious curves and gently arching armrests, SUMMERLAND by Richard Frinier blends into even the most traditional of settings. Yet with its clean form and subtly stylish details – including externalized rear supports and exposed, powder-coated die-cast aluminum legs – the collection looks right at home in modern settings as well.

Lounge chair: Hand-woven from top to base in an artfully subtle, textured weave, the SUMMERLAND Lounge chair features thick seat and back cushions and distinctive, externalized rear supports.

Frame: Aluminum

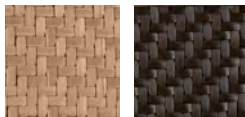
Finishing: Electrostatic powder-coated in a color similar to that of the fiber

Characteristics: Traditional yet modern, subtle yet distinctive, elegant, versatile

Frame Maintenance: Clean with a soft cloth and warm water.

Cushion Maintenance: All cushion covers can be removed and washed except those of man-made leather. To clean leather covers, please use a soft cloth and warm water.

Fiber Standard



066
bleach

082
tamari

Additional Items



Cover

Fabrics

Item code: **95069105**

Please see Fabric Options Fact Sheet

To learn more about DEDON, our collections and warranty policy, please visit our website –

www.dedon.de

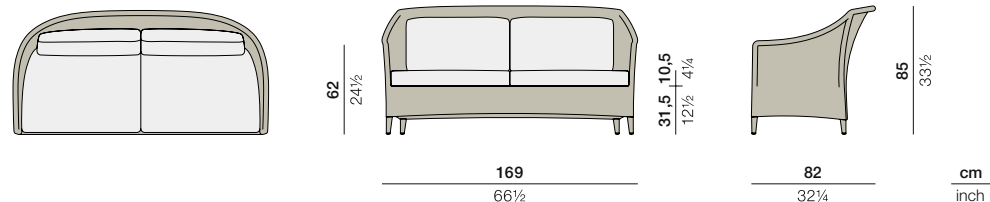
DEDON

SUMMERLAND

2-seater

Design by **Richard Frinier** | Item code: **069012** | Weight **14 kg/31 lbs** | Volume **1,19 m³/42 cu ft** | COM (Customer Own Material): **3,70 m/4.25 yd** (plain fabric only)

Measurements



Collection: With its tapering lines, gracious curves and gently arching armrests, SUMMERLAND by Richard Frinier blends into even the most traditional of settings. Yet with its clean form and subtly stylish details – including externalized rear supports and exposed, powder-coated die-cast aluminum legs – the collection looks right at home in modern settings as well.

2-seater: Hand-woven from top to base in an artfully subtle, textured weave, the SUMMERLAND 2-seater features thick seat and back cushions and distinctive, externalized rear supports.

Frame: Aluminum

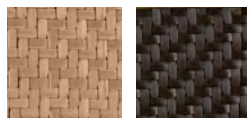
Finishing: Electrostatic powder-coated in a color similar to that of the fiber

Characteristics: Traditional yet modern, subtle yet distinctive, elegant, versatile

Frame Maintenance: Clean with a soft cloth and warm water.

Cushion Maintenance: All cushion covers can be removed and washed except those of man-made leather. To clean leather covers, please use a soft cloth and warm water.

Fiber Standard



066
bleach

082
tamari

Additional Items



Cover

Fabrics

Item code: **95069112**

Please see Fabric Options Fact Sheet

To learn more about DEDON, our collections and warranty policy, please visit our website –

www.dedon.de

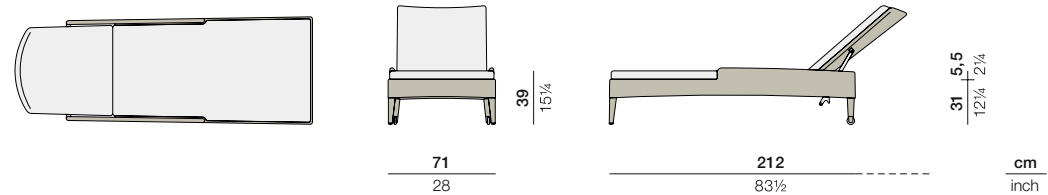
DEDON

SUMMERLAND

Beach chair

Design by **Richard Frinier** | Item code: **069019** | Weight **13 kg/29 lbs** | Volume **0,66 m³/23 cu ft** | COM (Customer Own Material): **3,50 m/4.00 yd** (plain fabric only)

Measurements



Collection: With its tapering lines, gracious curves and gently arching armrests, SUMMERLAND by Richard Frinier blends into even the most traditional of settings. Yet with its clean form and subtly stylish details – including externalized rear supports and exposed, powder-coated die-cast aluminum legs – the collection looks right at home in modern settings as well.

Beach chair: Hand-woven in an artfully subtle, textured weave, the SUMMERLAND Beach chair features an adjustable back, comfortable cushions and rear wheels for easy mobility.

Frame: Aluminum

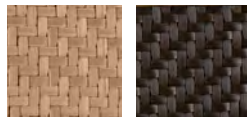
Finishing: Electrostatic powder-coated in a color similar to that of the fiber

Characteristics: Traditional yet modern, subtle yet distinctive, elegant, versatile

Frame Maintenance: Clean with a soft cloth and warm water.

Cushion Maintenance: All cushion covers can be removed and washed except those of man-made leather. To clean leather covers, please use a soft cloth and warm water.

Fiber Standard



066
bleach

082
tamari

Additional Items



Cover

Special Features



The furniture is fitted with wheels.

Fabrics

Item code: **95069019**

Please see Fabric Options Fact Sheet

To learn more about DEDON, our collections and warranty policy, please visit our website –

www.dedon.de

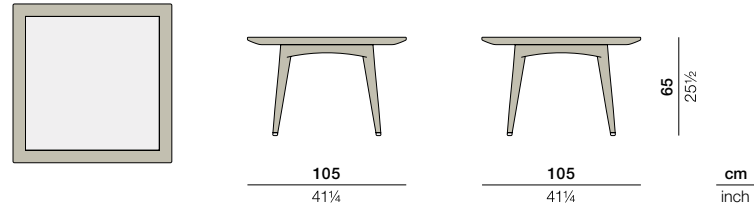
DEDON

SUMMERLAND

Cocktail table

Design by **Richard Frinier** | Item code: **069078 + 069098** | Weight **12 kg/26 lbs** | Volume **0,72 m³/25 cu ft**

Measurements



Collection: With its tapering lines, gracious curves and gently arching armrests, SUMMERLAND by Richard Frinier blends into even the most traditional of settings. Yet with its clean form and subtly stylish details — including externalized rear supports and exposed, powder-coated die-cast aluminum legs — the collection looks right at home in modern settings as well.

Cocktail table: Hand-woven in an artfully subtle, textured weave, this SUMMERLAND dining table features a tabletop of Tamari-colored single-layer safety glass.

Frame: Aluminum

Finishing: Item is electrostatic powder-coated in color similar that of fiber. Satinated and lacquered glass top is set inside frame.

Characteristics: Traditional yet modern, subtle yet distinctive, elegant, versatile

Frame Maintenance: Clean with a soft cloth and warm water.

Fiber Standard



066
bleach

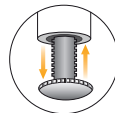
082
tamari

Additional Items



Cover

Special Features



The furniture is fitted with sliding mechanisms for height adjustment.

Tabletop

Tamari glass top
22269075082

To learn more about DEDON, our collections and warranty policy, please visit our website –

www.dedon.de

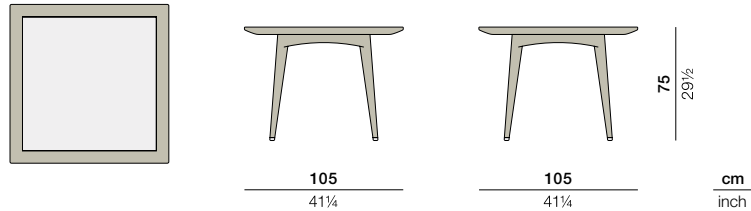
DEDON

SUMMERLAND

Dining table

Design by Richard Frinier | Item code: 069078 + 069095 | Weight 13 kg/29 lbs | Volume 0,83 m³/29 cu ft

Measurements



Collection: With its tapering lines, gracious curves and gently arching armrests, SUMMERLAND by Richard Frinier blends into even the most traditional of settings. Yet with its clean form and subtly stylish details — including externalized rear supports and exposed, powder-coated die-cast aluminum legs — the collection looks right at home in modern settings as well.

Dining table: Hand-woven in an artfully subtle, textured weave, this SUMMERLAND dining table features a tabletop of Tamari-colored single-layer safety glass.

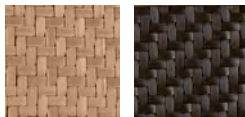
Frame: Aluminum

Finishing: Item is electrostatic powder-coated in color similar that of fiber. Satinated and lacquered glass top is set inside frame.

Characteristics: Traditional yet modern, subtle yet distinctive, elegant, versatile

Frame Maintenance: Clean with a soft cloth and warm water.

Fiber Standard



066
bleach

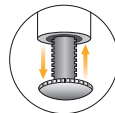
082
tamari

Additional Items



Cover

Special Features



The furniture is fitted with sliding mechanisms for height adjustment.

Tabletop

Tamari glass top
22269075082

To learn more about DEDON, our collections and warranty policy, please visit our website –

www.dedon.de

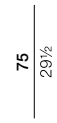
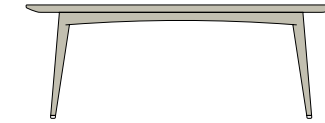
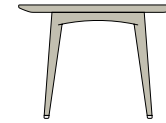
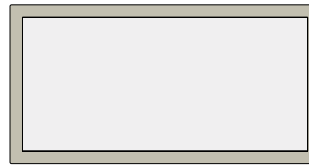
DEDON

SUMMERLAND

Dining table

Design by Richard Frinier | Item code: 069070 + 069090 | Weight 18,5 kg/41 lbs | Volume 1,61 m³/57 cu ft

Measurements



105
41¼

205
80%

75
29½
cm
inch



Collection: With its tapering lines, gracious curves and gently arching armrests, SUMMERLAND by Richard Frinier blends into even the most traditional of settings. Yet with its clean form and subtly stylish details — including externalized rear supports and exposed, powder-coated die-cast aluminum legs — the collection looks right at home in modern settings as well.

Dining table: Hand-woven in an artfully subtle, textured weave, this SUMMERLAND dining table features a tabletop of Tamari-colored single-layer safety glass.

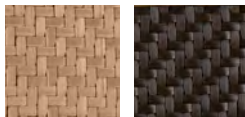
Frame: Aluminum

Finishing: Item is electrostatic powder-coated in color similar that of fiber. Satinated and lacquered glass top is set inside frame.

Characteristics: Traditional yet modern, subtle yet distinctive, elegant, versatile

Frame Maintenance: Clean with a soft cloth and warm water.

Fiber Standard



066
bleach

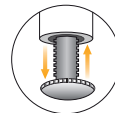
082
tamari

Additional Items



Cover

Special Features



The furniture is fitted with sliding mechanisms for height adjustment.

Tabletop

Tamari glass top
22269065082

To learn more about DEDON, our collections and warranty policy, please visit our website –

www.dedon.de

DEDON